



Congrès National Smart City 2018

Smart Canton Genève
Quels enjeux de gouvernance ?

Gianfranco Moi
Deputy Director General

State of Geneva territory



Smart City Index

EasyPark ranked 100 cities around the world based on 19 different factors

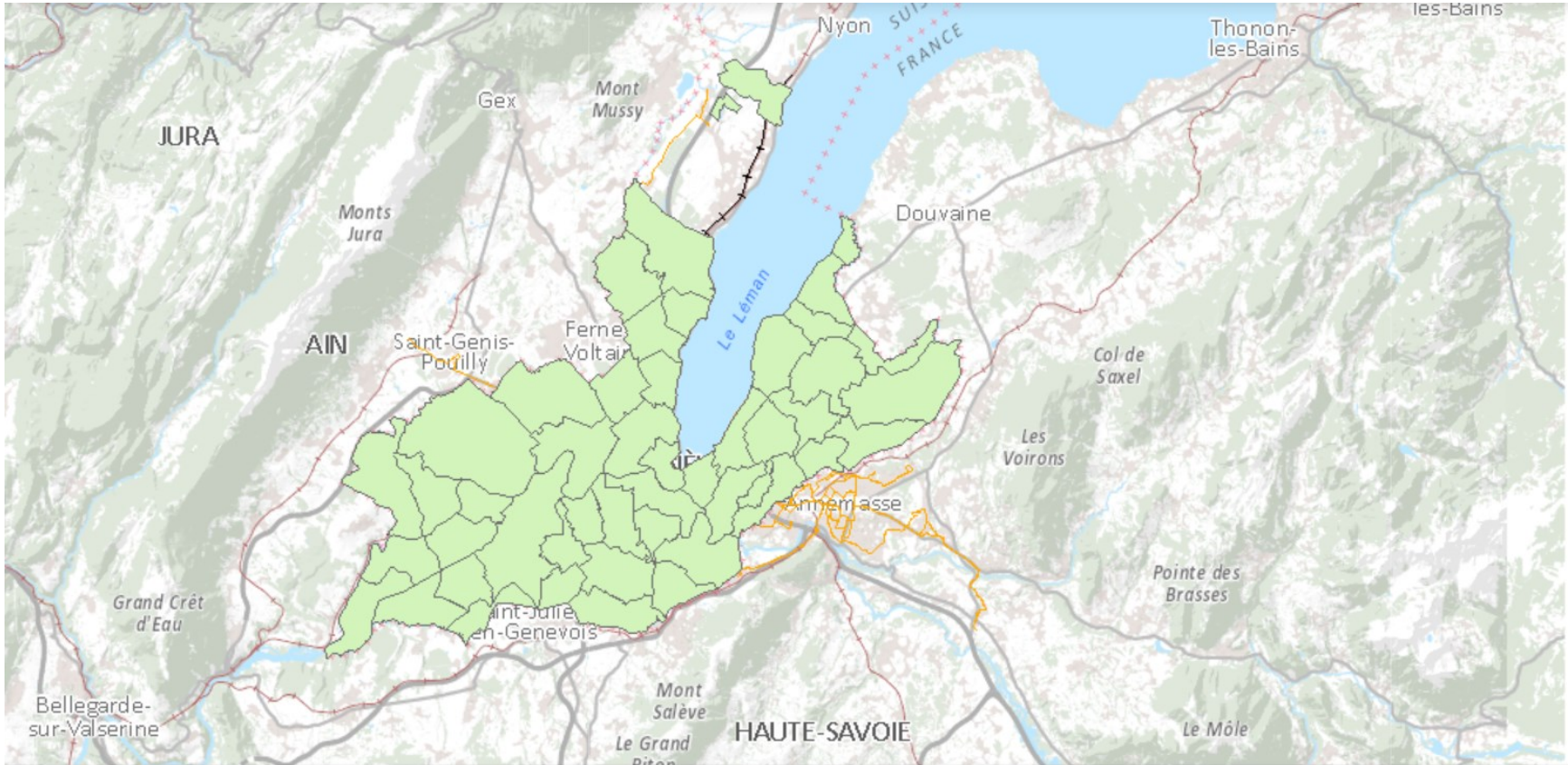
EasyPark ranked 100 cities around the world using 19 different factors:

- business ecosystem,
- car sharing services,
- citizen participation in elections,
- clean energy,
- digitalization of government,
- level of education,
- environment protection,
- internet speed,
- living standard,
- public transport,
- smart building,
- smart parking,
- smartphone penetration,
- traffic congestion,
- urban planning,
- 4G LTE,
- wifi hotspots,
- waste disposal.

Smart City EasyPark 2018 Index ranking

1	Copenhagen	Denmark	21	Seoul	South Korea
2	Singapore	Singapore	22	Luxembourg	Luxembourg
3	Stockholm	Sweden	23	Helsinki	Finland
4	Zurich	Switzerland	24	New York	United States
5	Boston	United States	25	München (Munich)	Germany
6	Tokyo	Japan	26	Düsseldorf	Germany
7	San Francisco	United States	27	Västerås	Sweden
8	Amsterdam	Netherlands	28	Washington, DC	United States
9	Geneva	Switzerland	29	Bayreuth	Germany
10	Melbourne	Australia	30	Hannover	Germany
11	Vancouver	Canada	31	Köln (Cologne)	Germany
12	Sydney	Australia	32	Vienna	Austria
13	Berlin	Germany	33	Frankfurt am Main	Germany
14	Hamburg	Germany	34	Oslo	Norway
15	Göteborg	Sweden	35	Philadelphia	United States
16	Montreal	Canada	36	Chicago	United States
17	London	United Kingdom	37	Dubai	United Arab Emirates
18	Tel Aviv	Israel	38	Trondheim	Norway
19	Paris	France	39	Helsingborg	Sweden
20	Toronto	Canada	40	Ottawa	Canada

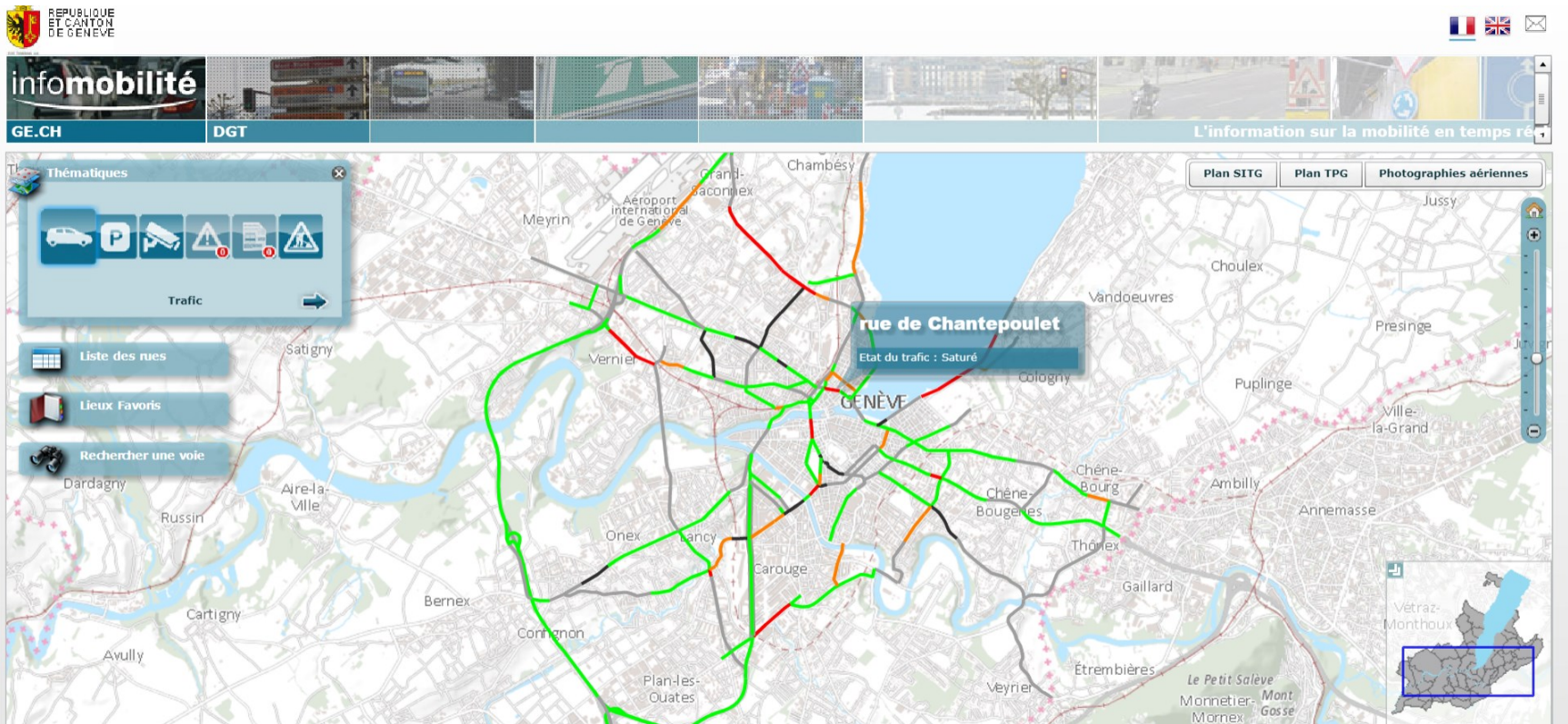
Many initiatives ... not yet coordinated



Challenges

- Many initiatives are launched but not yet coordinated ... the lack of standards and global governance induces:
 - Higher investment and maintenance costs in duplicated infrastructures and services.
 - Extended deployment times of "one of" projects without the possibility of capitalizing on best practices.
 - Limited opportunities for sharing, acquiring, selling solutions in the "EU single digital market".
 - Missed opportunities for synergies and interoperability across solutions.
 - Lack of participation of SMEs, Academic Institutions and Civil Society Organizations in the projects.

Mobility in Geneva



Opportunities

- Leveraging existing assets and capabilities :
 - Political Support
 - Open Data strategy
 - Rich and robust GIS system
 - Reliable networks and infrastructures
 - Living Lab Approach
 - Local, National and International collaboration
 - Innovation ecosystem cartography

Political Support



Open Data Strategy

Categories

- Geography 503
- Territory and envir... 436
- Mobility and Transport 96
- Agriculture, forestry 84
- Energy 69
- Culture, media, inf... 48
- National economy 23
- Health 23
- Politics 10
- Public order and se... 5
- Construction and ho...

[^ Show Less Categories](#)

Keywords

vote 1

513 datasets found

Order by Relevance ▾

QUALITE EN DESSERTE DES TRANSPORTS PUBLICS

Geography, Mobility and Transport

La méthode qui permet de déterminer les niveaux de qualité de la desserte par les transports publics est décrite dans la Norme suisse SN 640 281 de l'Union des professionnels su...

[opendata.swiss](#)

Data Organizations Applications About - 🔍

Home > Organizations > Canton of Geneva

Canton of Geneva

The canton of Geneva has been committed to making public data open for a few years now. On this portal, you will find all the data from the Geneva cantonal administration that meet the principles of Open Government Data, as well as geodata from the geographic information system of Geneva (SITG) that fall under the OpenData policy.



POST TENEBRAS LUX



REPUBLIQUE
ET CANTON
DE GENEVE

POST TENEBRAS LUX

Presidential Department
Directorate General Economic Development, Research and Innovation

Reliable networks and Infrastructures



Electricité



Gaz



Eau



Fibre optique



Conseils



Mobilité



Rich and Robust GIS

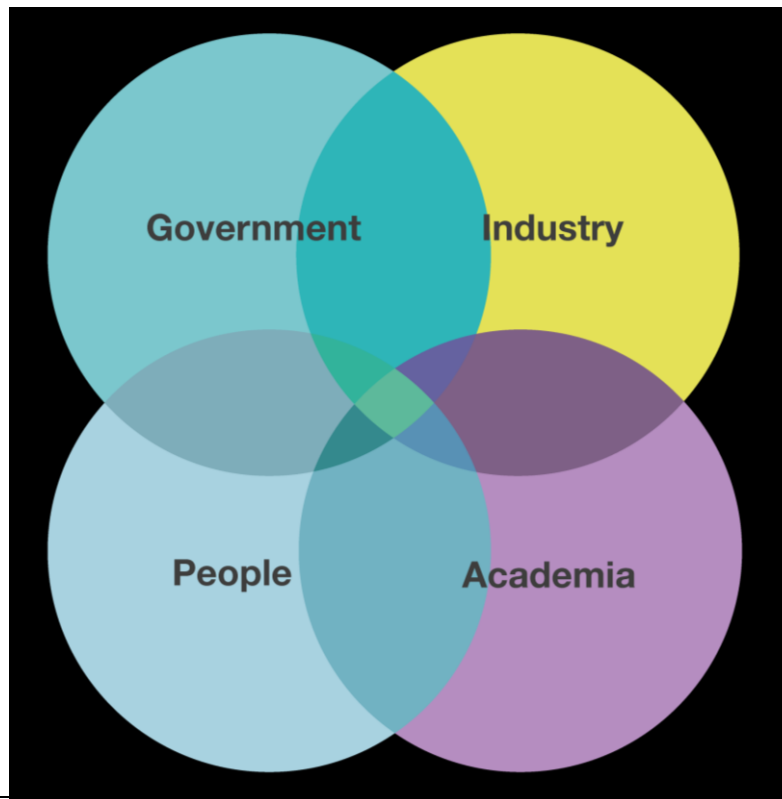
The screenshot displays the SITG (Système d'Information Territoriale Genevois) web application. The interface includes a search bar at the top with the text "Rechercher un lieu ou des données". Below the search bar is a navigation menu with "Données" selected. The "Données" menu lists various layers, including "Agglomération (87)", "Transport", "Parcelles", "Photograph", "Plan SITG", and "Plan SITG". The "Transport" layer is expanded, showing sub-layers like "Arrêts TPG", "Réseau train", "Réseau tram", and "Lignes TPG". The map shows a detailed view of Geneva, with red lines representing transport routes and green dots representing stops. The map includes a scale bar (0.2km) and a coordinate system (CH1903+/LV95). The SITG logo and "LE TERRITOIRE GENEVOIS À LA CARTE" are visible in the top left corner.

Rich and Robust GIS

The screenshot displays the 'infomobilité' website interface. At the top left is the logo of the 'REPUBLIQUE ET CANTON DE GENÈVE'. The main navigation bar includes 'GE.CH', 'DGT', 'Avis de travaux', and 'L'information sur la mobilité en temps réel'. A search bar is visible with the text 'bretelle Lausanne - Ferney - aéroport'. Below the search bar, there are buttons for 'Plan SITG', 'Plan TPG', and 'Photographies aériennes'. The main map area shows a detailed view of Geneva, with various roads highlighted in green and red. Numerous red triangular warning icons with black symbols (a person digging, a person with a shovel, and a person with a sign) are scattered across the map, indicating construction sites and manifestations. A legend at the bottom left of the map area identifies these icons: 'Chantier ouvert' (black symbol), 'Chantier ouvert d'ici 7 jours' (red symbol), and 'Manifestation' (yellow symbol). On the left side of the map, there is a sidebar with 'Thématiques' and 'Chantiers et manifestations' sections, containing icons for car, parking, camera, and construction. Below this are buttons for 'Liste des chantiers ...', 'Lieux Favoris', and 'Rechercher une voie'. The map also shows various districts of Geneva, including Meyrin, Vernier, Carouge, and Chêne-Bougeries. A small inset map in the bottom right corner shows the location of Geneva within Switzerland.

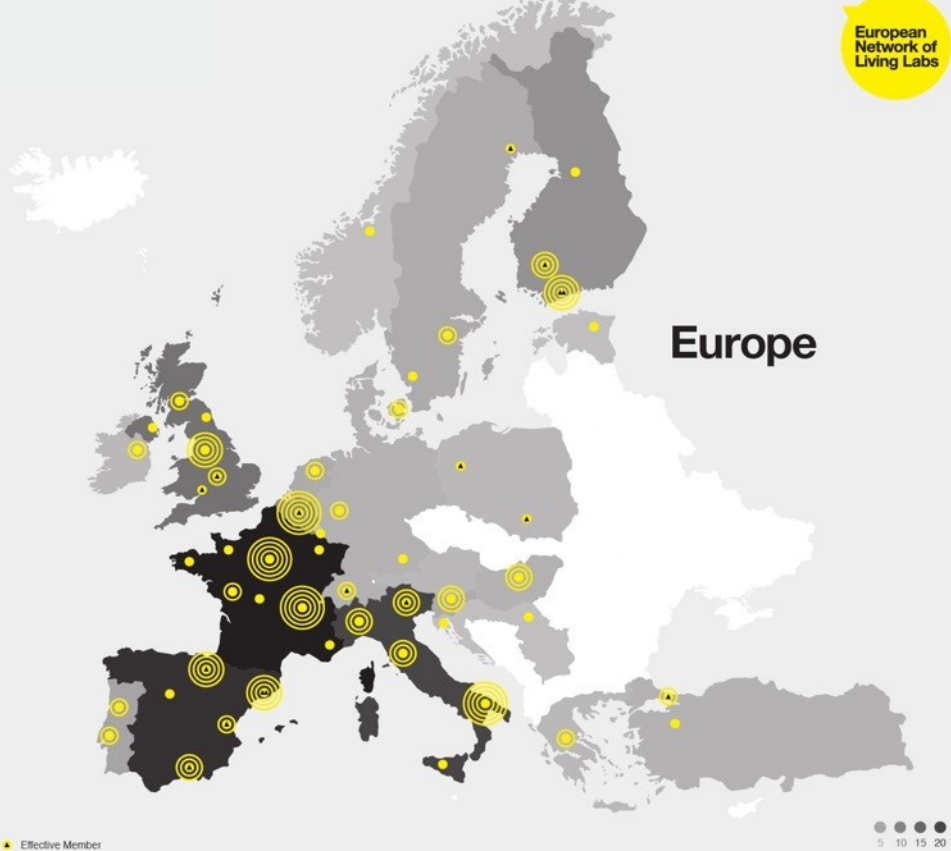
Living Lab approach: Genève Lab

The quadruple Helix model to co-create the future



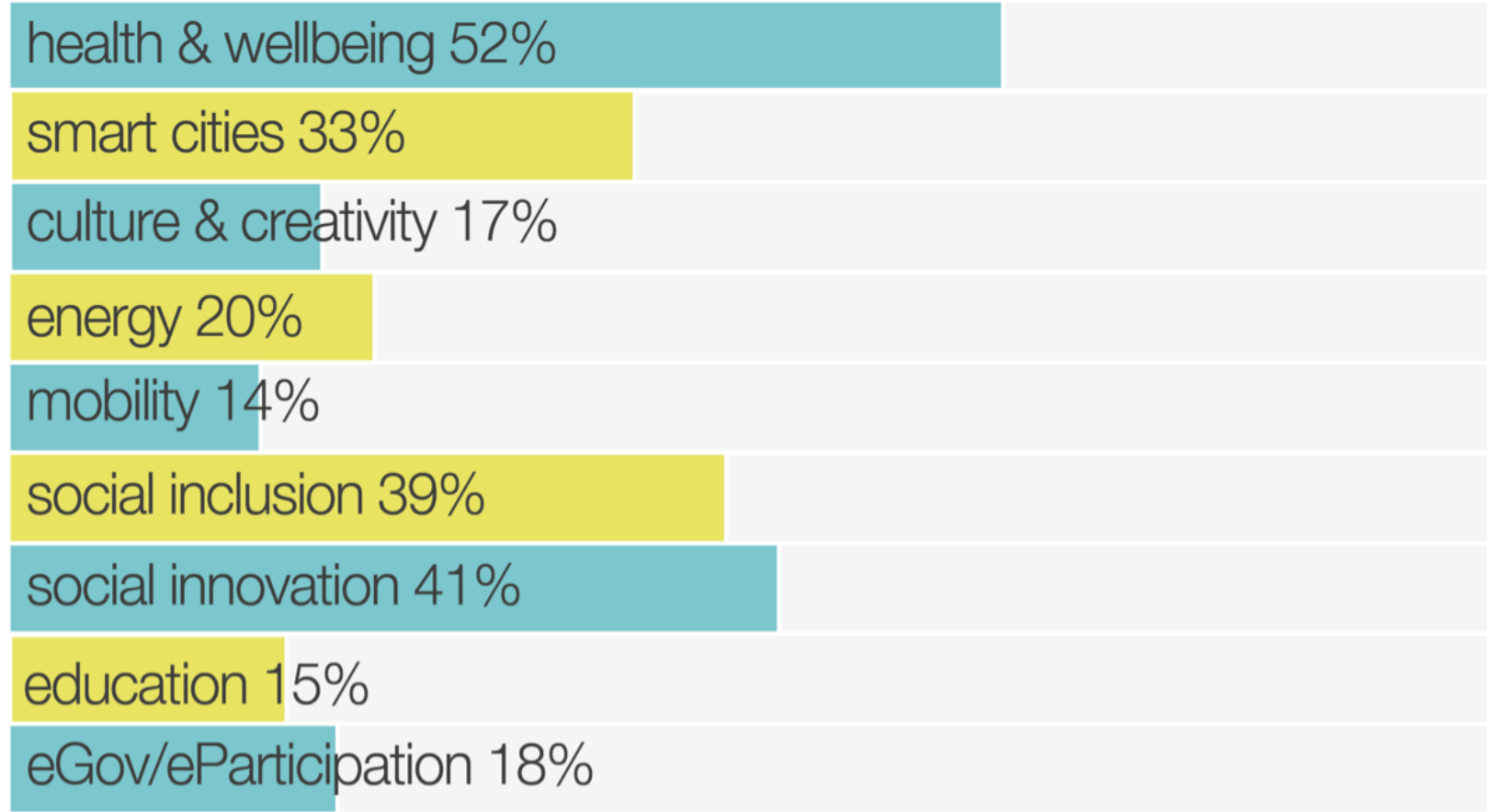
The Living Lab approach develops, manages and contributes to local ecosystems and inter-disciplinary teams thus fostering inclusion within urban and regional contexts. Multi-thematic: Culture ,urban innovation, cultural-heritage, well-being, ICT, sustainability, skills development and inclusion.

ENoLL LIVING LABS AROUND THE WORLD



EnoLL Living labs thematic activities

ENoLL combines vertical specialization domains (health, smart cities, creativity, education) with horizontal and territorial specializations



Genève Lab, UNI GE, HES-SO European Network of Living Labs

European Network of Living Labs

About us Newsroom Events Network Projects Members area

LIVING LABS & SUSTAINABLE DEVELOPMENT GOALS: FROM THEORIES TO PRACTICE

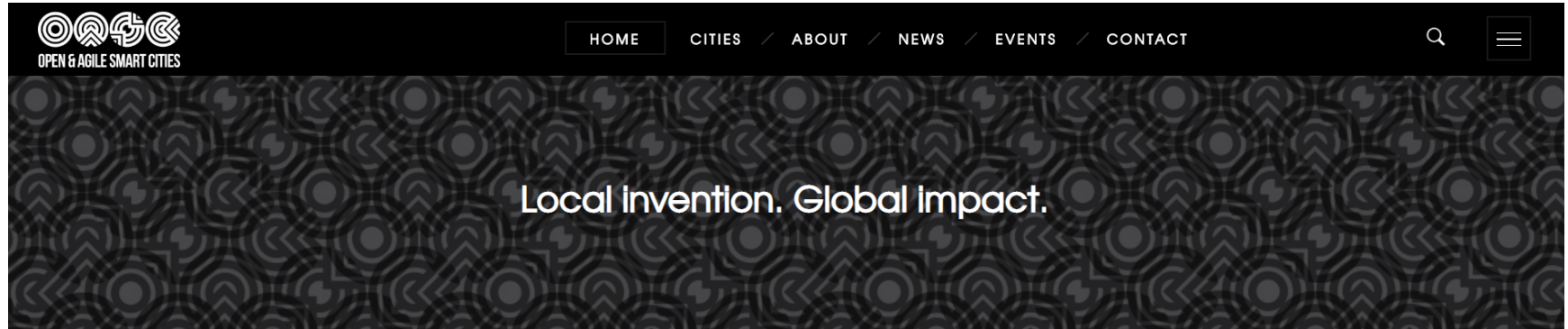
We are looking forward to welcoming you in **Geneva**

open living lab days 2018



Open And Agile Smart Cities

International collaboration



”
The vision of the Open & Agile Smart Cities initiative is to create an open smart city market based on the needs of cities and communities.
FROM THE OASC VISION

Funding and Expertise for
Your Smart City Solution:
Apply Now
6. August 2018

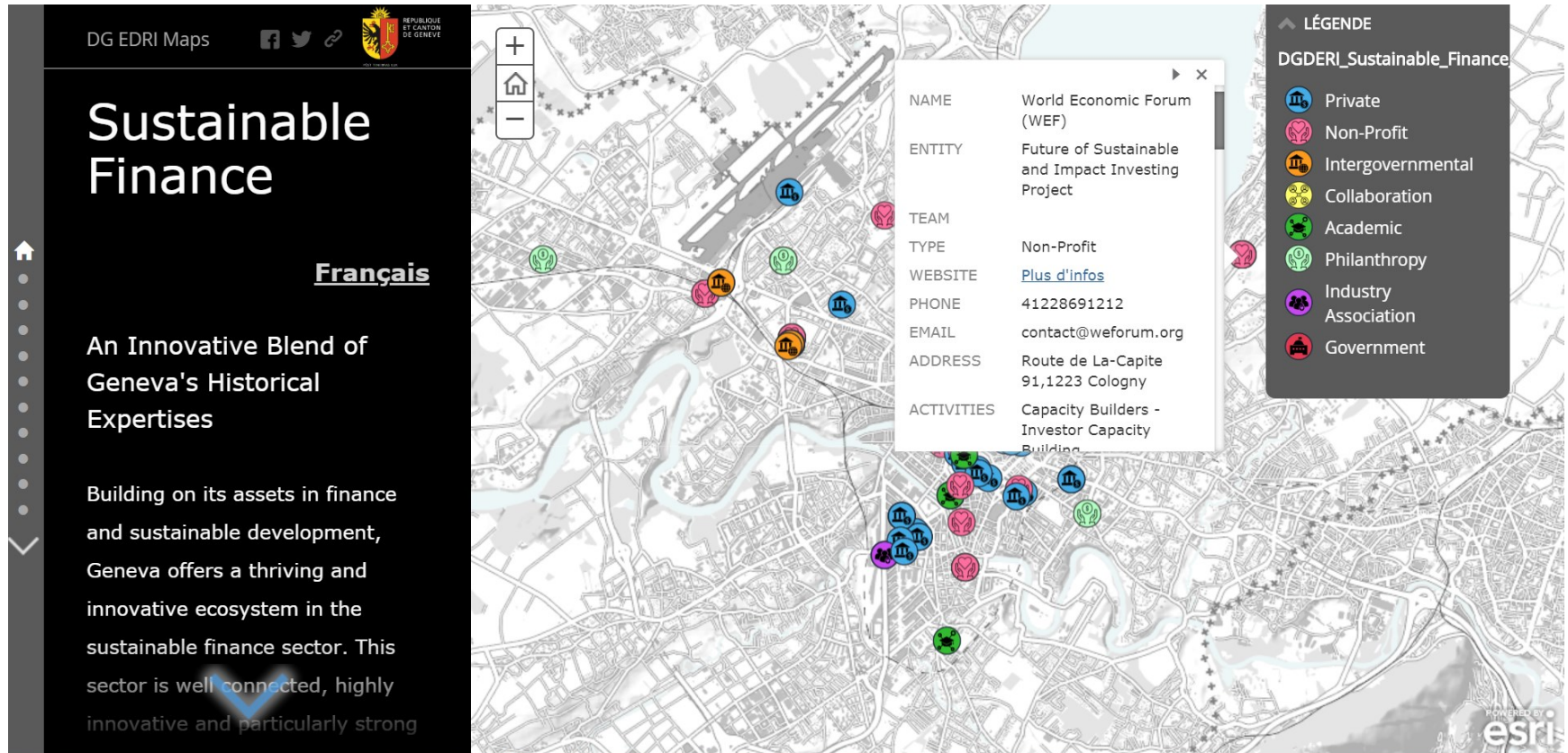


Register now: Workshop on
IoT Open Data Access
3. August 2018

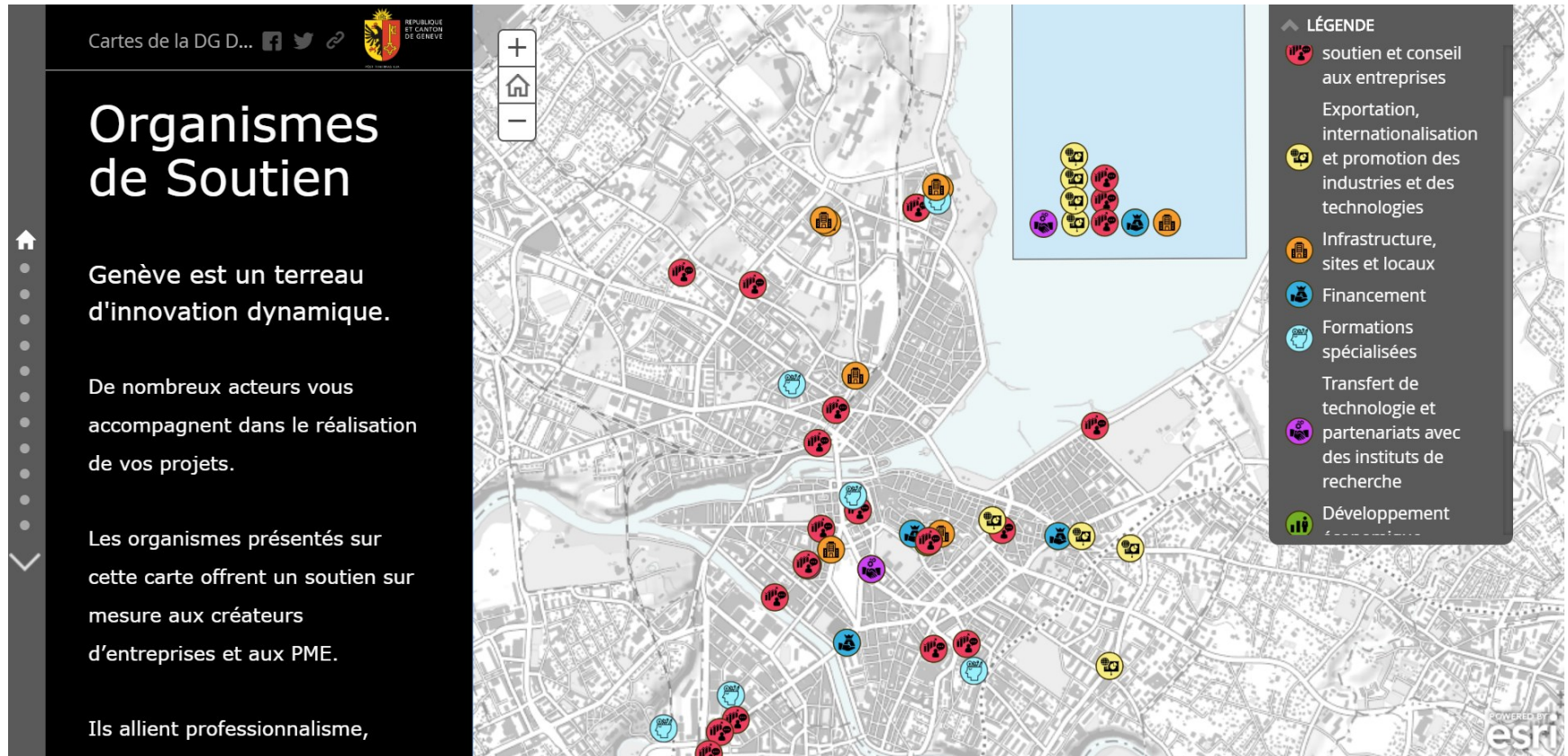


CONNECTED SMART CITIES
CONFERENCE 2018

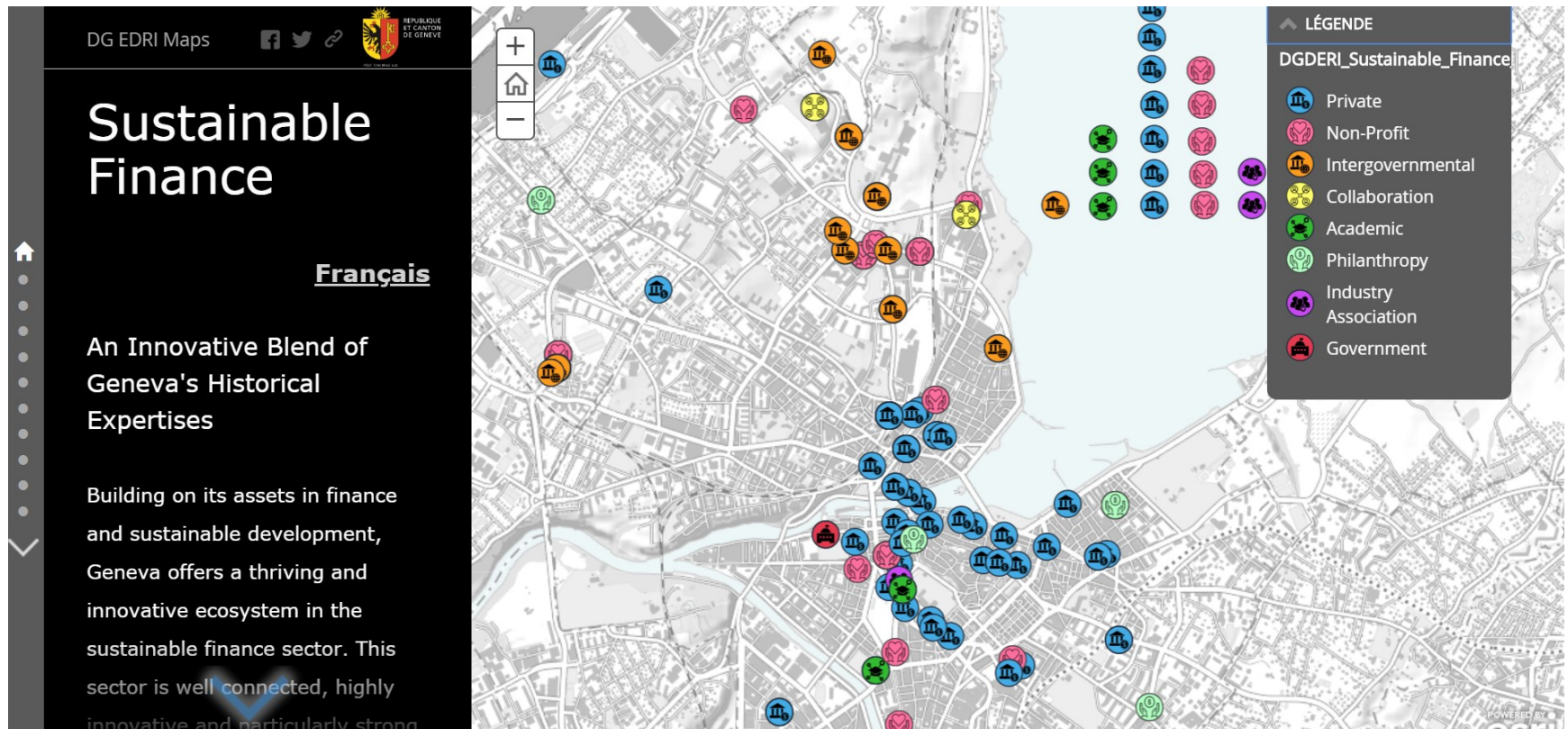
Innovation and Durability ecosystem cartography



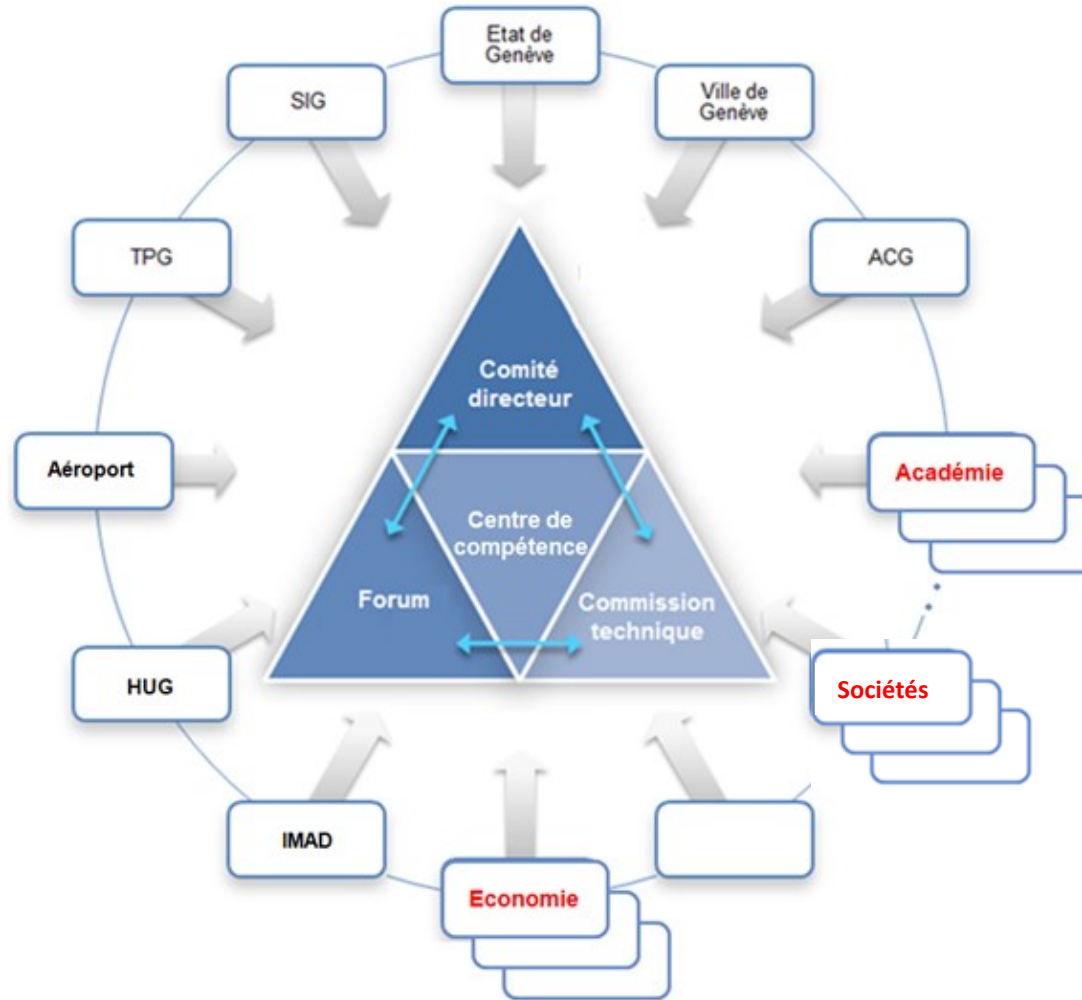
Innovation and Durability ecosystem cartography



Innovation and Durability ecosystem cartography



Smart Geneva Governance



Email: Gianfranco.Moi@etat.ge.ch

Linkedin: <https://www.linkedin.com/in/gianfrancomoi/>

Mobile: +41 79 615 6267

Skype: [gianfranco_moi](https://www.skype.com/people/gianfranco_moi)

